

# Hybrid antenna FDD+TDD

Model: HX-T101A

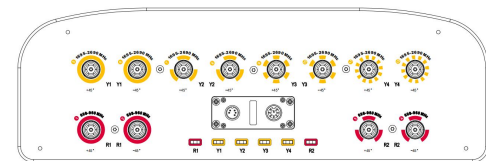
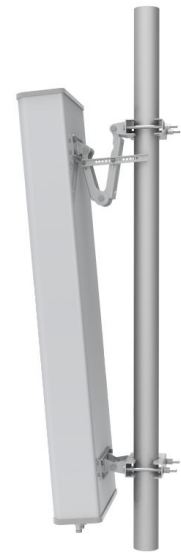


## ELECTRICAL SPECIFICATIONS

Frequency Range (MHz)	R1/R2 (698-960)			Y1/Y2/Y3/Y4 (1695-2690)			
	698-824	791-894	880-960	1695-1990	1920-2180	2300-2400	2490-2690
Polarization	±45°						
Gain at mid tilts (dBi)	14.0	14.3	14.6	16.9	17.1	17.3	17.6
Gain over all tilts (dBi)	13.9±0.6	14.2±0.6	14.5±0.6	16.8±0.6	17.0±0.6	17.2±0.6	17.5±0.6
Horizontal 3dB beam width(°)	68±6	65±6	63±6	38±5	35±5	33±5	30±5
Vertical 3dB beam width(°)	11±2	10±1.5	9±1	10.5±1	9±1	8±1	7.5±1
Front to back ratio(dB)	≥22	≥23	≥25	≥24	≥24	≥25	≥25
Cross polar ratio(0°)(dB)	≥15	≥16	≥17	≥15	≥16	≥17	≥18
Upper side lobe suppression (dB)	≥15	≥16	≥15	≥15	≥16	≥16	≥15
Electrical Downtilt (°)	2-14			2-12			
Electrical Downtilt accuracy (°)	±1						
Ports VSWR	≤1.5						
Isolation: intra-system (dB)	≥25						
Isolation: inter-system (dB)	≥25						
Intermodulation IM3 (2×43dBm)	≤-153dBc						
Impedance (Ω)	50						
Max Input Power (W)	1000						

## MECHANICAL SPECIFICATIONS

Connector(s)	12×4.3-10 female
Connector position	Bottom
Antenna Dimensions (mm)	2190×500×158
Packing Dimensions (mm)	2480×560×200
Mechanical Downtilt kits (°)	0-12
Radome Color	light gray
Radome Material	Fiberglass
Antenna weight (kg)	≤42
Packing weight (kg)	≤50
Wind Loading @ Velocity, frontal	1946N@150 km/h
Wind Loading @ Velocity, lateral	288N@150 km/h
Wind Loading @ Velocity, rear	2249N@150 km/h
Wind Speed,maximum	200 km/h
Operating temperature (°C)	-40~+60
Mounting Pipe Diameter (mm)	Φ50~Φ115



Guangdong HOSENC Communication Technology Co., Ltd®

Address: No. 100, South Sanshui Avenue, Baini Town, Sanshui District, Foshan City, Guangdong Province

**危险 Dangerous:**

- 高空作业时，操作人员一定要系好安全带，戴好安全帽。  
When working high above the ground, the operator must wear safety belts and helmet.
- 请穿鞋套和橡胶底的鞋子，请穿长袖衬衫和橡胶手套的防护服。  
Wear shoes with rubber soles and heels. Wear protective clothing including a long-sleeved shirt and rubber gloves.
- 请勿在雷雨、大风天气或者所在区域有闪电或者雷声时安装，请勿使用金属梯子。  
Do not install on a wet or windy day or when lightning or thunder is in the area. Do not use metal ladder.
- 请勿安装在电力线附近。电源线、电话线、电视线和拉线外皮相似，任何导线都可能导致人身触电。  
Do not install near power lines. Power lines, telephone lines, and pay wires look the same. Assume any wire or line can electrocute you.

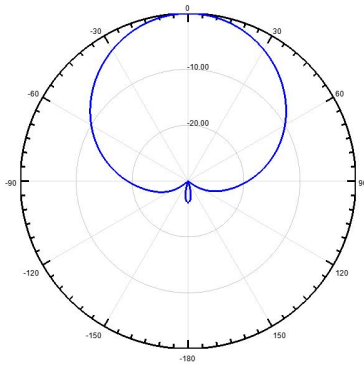
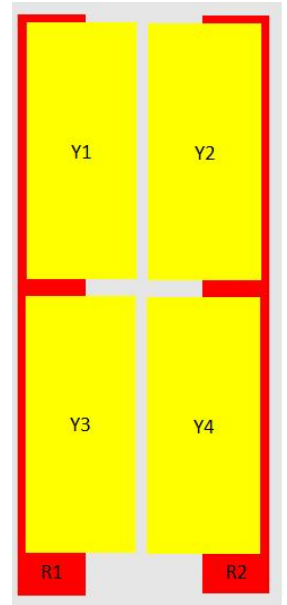
# Hybrid antenna FDD+TDD

Model: HX-T101A

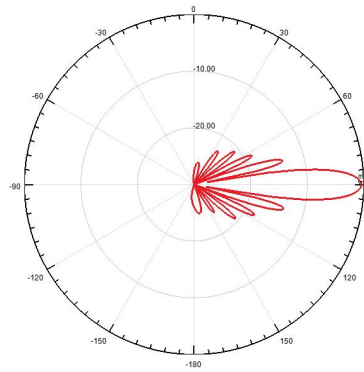


## Integrated RET Properties

RET type	Replaceable Integrated RET
RET protocol	AISG 2.0/3GPP
Power supply(V)	10-30 DC
Power consumption(W)	≤0.6(Idle, 12V), ≤6(in Motion, 12V)
Adjustment time (Full Range)	≤4Mins
Adjustment cycles	> 50,000
Temperature range(°C)	-40~65
Lightning protection	3KA(8/20μs) @ Pin5& Pin3; 5KA(8/20μs) @ Pin1/ Pin6& Pin7
Connectors	2 x 8 Pin circle connector according To IEC 60130-9 And AISG. Daisy chain in: Male, Daisychain out :Female Pin1: 12V; Pin3: RS485B; Pin5: RS485A; Pin6: 10-30V; Pin7: GND; Pin2 & Pin4 & Pin8: N/C

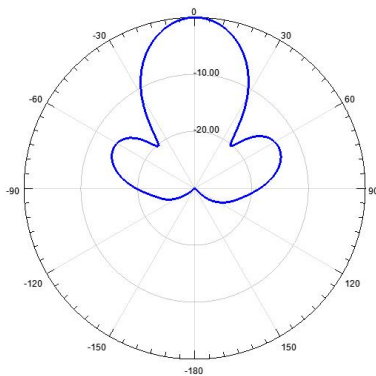


690-960 H Pattern

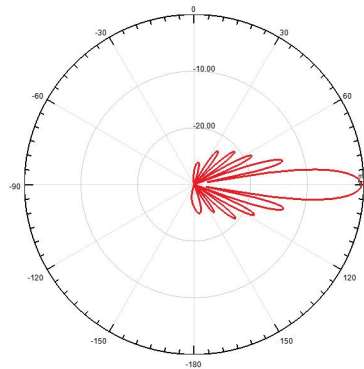


690-960 E Pattern

Ant Array	RET Unique ID
R1	HXT101A0N25K00001R1
R2	HXT101A0N25K00001R2
Y1	HXT101A0N25K00001Y1
Y2	HXT101A0N25K00001Y2
Y3	HXT101A0N25K00001Y3
Y4	HXT101A0N25K00001Y4



690-960 H Pattern



690-960 E Pattern

[http://www.hosenc.com/page109?product\\_id=73](http://www.hosenc.com/page109?product_id=73)



Guangdong HOSENC Communication Technology Co., Ltd®

Address: No. 100, South Sanshui Avenue, Baini Town, Sanshui District, Foshan City, Guangdong Province

**危险 Dangerous:**

高空作业时，操作人员一定要系好安全带，戴好安全帽。  
When working high above the ground, the operator must wear safety belts and helmet.

请穿戴好绝缘鞋和绝缘手套。请穿长袖衬衫和橡胶手套的防护服。  
Wear shoes with rubber soles and heels. Wear protective clothing including a long-sleeved shirt and rubber gloves.

请勿在雷雨、大风天气或者所在区域有闪电或者雷声时作业。请勿使用金属梯子。  
Do not install on a wet or windy day or when lightning or thunder is in the area. Do not use metal ladder.

请勿安装在电源线附近。电源线、电话线和拉线外露相碰，任何导线都有可能引入触电危险。  
Do not install near power lines. Power lines, telephone lines, and guy wires look the same. Assume any wire or line can electrify you.